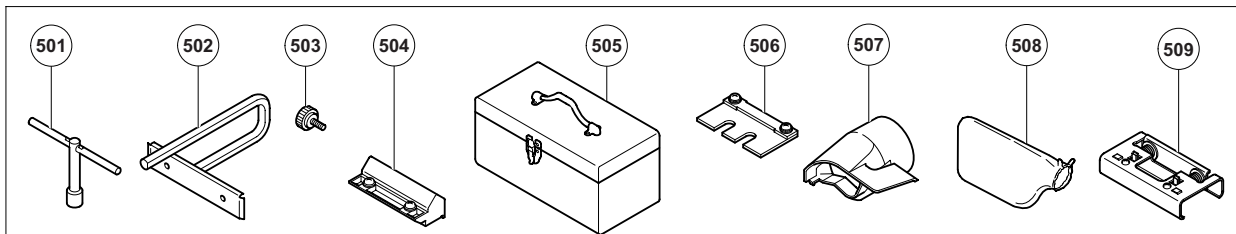
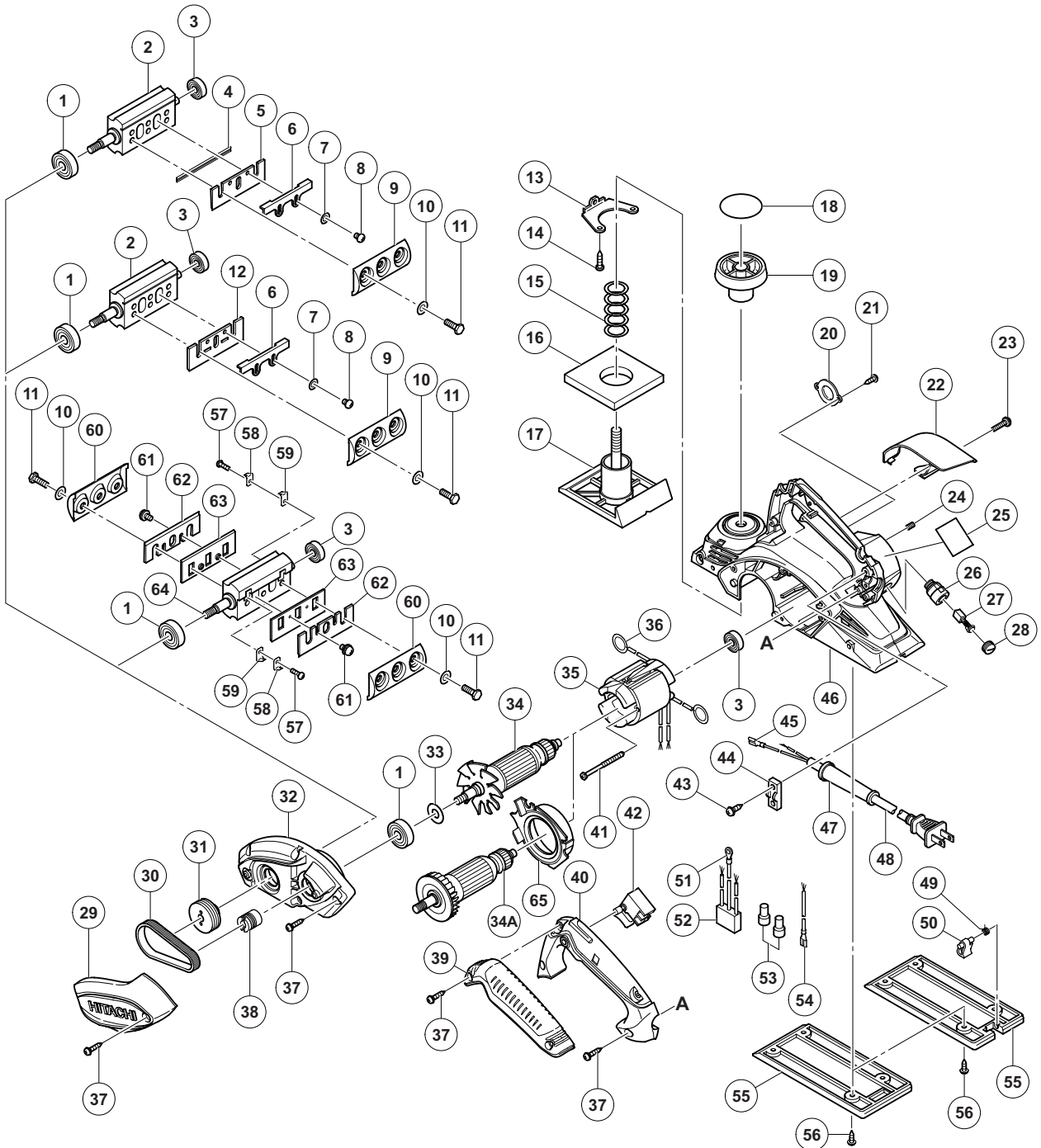


## ELECTRIC TOOL PARTS LIST

■ **PLANER**  
**Model P 20ST**

**2012·10·15**  
**(E2)**



**PARTS**

P 20ST

ITEM NO.	CODE NO.	DESCRIPTION	NO. USED	REMARKS
1	620-0VV	BALL BEARING 6200VVCMP2L	2	
* 2	334-480	CUTTER BLOCK ASS'Y (W/B.B)	1	INCLUD. 1, 3 EXCEPT FOR IND
3	608-VVM	BALL BEARING 608VVC2PS2L	2	
* 4	879-418	PLANER BLADES (1 PAIR)	2	FOR DOUBLE EDGE BLADE TYPE
* 5	334-478	SET PLATE (B) (1 PAIR)	2	FOR DOUBLE EDGE BLADE TYPE
* 6	314-754	SET PLATE (A)	2	EXCEPT FOR IND
* 7	949-423	WASHER M4 (10 PCS.)	4	EXCEPT FOR IND
* 8	949-213	MACHINE SCREW M4 X 5 (10 PCS.)	4	EXCEPT FOR IND
* 9	316-398	BLADE HOLDER (1 PAIR)	2	EXCEPT FOR IND
10	334-706	WASHER 65MN T0.5	6	
11	334-707	BOLT M6	6	
* 12	314-746	PLANER BLADES 82 MM (1 PAIR)	2	EXCEPT FOR DOUBLE EDGE BLADE TYPE
13	958-945	SCREW PLATE	1	
14	954-004	TAPPING SCREW D4 X 16	1	
15	958-709	SPRING	1	
16	958-708	RUBBER PACKING	1	
17	334-738	FRONT BASE	1	
18		SCALE	1	
19	942-328	KNOB	1	
20	334-492	BEARING COVER	1	
21	309-470	TAPPING SCREW (W/FLANGE) D4 X 12 (BLACK)	2	
22	334-501	TIP COVER	1	
23	333-163	MACHINE SCREW (BLACK) M4 X 16	1	
24	938-477	HEX. SOCKET SET SCREW M5 X 8	2	
25		NAME PLATE	1	
26	957-571	BRUSH HOLDER	2	
27	999-021	CARBON BRUSH (1 PAIR)	2	
28	931-266	BRUSH CAP	2	
29	334-487	BELT COVER	1	
30	958-718	BELT	1	
31	334-491	PULLEY (B)	1	
32	334-716	END BRACKET	1	
33	334-713	WASHER (A)	1	
* 34	360-942H	ARMATURE 110 V	1	
* 34	360-942U	ARMATURE ASS'Y 120 V	1	INCLUD. 1, 3
* 34	360-942D	ARMATURE 127 V	1	
* 34	360-942G	ARMATURE 220 V	1	
* 34	360-942E	ARMATURE 230 V	1	
* 34	360-942F	ARMATURE 240 V	1	
* 34A	360-936G	ARMATURE 220 V	1	FOR CHN
* 35	340-834C	STATOR ASS'Y 110 V	1	INCLUD. 36
* 35	340-835C	STATOR ASS'Y 110 V-120 V	1	INCLUD. 36 FOR USA, CAN (120 V), SAU, UAE (110 V)
* 35	340-835D	STATOR ASS'Y 127 V	1	INCLUD. 36
* 35	340-834E	STATOR ASS'Y 220 V-230 V	1	INCLUD. 36
* 35	340-835E	STATOR ASS'Y 220 V-230 V	1	INCLUD. 36 FOR BRA (220 V), PAN (220 V), PHI, INA, SIN, HKG, IND, ISR, UAE (220 V-230 V)
* 35	340-834F	STATOR ASS'Y 240 V	1	INCLUD. 36
* 35	340-835F	STATOR ASS'Y 240 V	1	INCLUD. 36 FOR MAL, UAE (240 V)
36	931-867	BRUSH TERMINAL	2	
37	301-653	TAPPING SCREW (W/FLANGE) D4 X 20 (BLACK)	10	

**PARTS**

ITEM NO.	CODE NO.	DESCRIPTION	NO. USED	REMARKS
38	334-490	PULLEY (A)	1	
39	334-717	GRIP COVER	1	
40	334-484	HANDLE COVER	1	
41	960-108	HEX. HD. TAPPING SCREW D4 X 60	2	
*	42	334-474	SWITCH	1 W/OFF LOCK TYPE
*	42	322-101	SWITCH	1 W/ON LOCK TYPE
	43	984-750	TAPPING SCREW (W/FLANGE) D4 X 16	2
	44	937-631	CORD CLIP	1
	45	331-707	FASTON	1
*	46	334-482	HOUSING ASS'Y	1 INCLUD. 13, 14, 24, 26
*	46	334-483	HOUSING ASS'Y	1 INCLUD. 13, 14, 24, 26 FOR USA, CAN
*	47	938-051	CORD ARMOR D10.1	1
*	47	953-327	CORD ARMOR D8.8	1
*	48	500-409Z	CORD	1 (CORD ARMOR D8.8)
*	48	500-247Z	CORD	1 (CORD ARMOR D8.8) FOR NOR SWE, DEN, FIN
*	48	500-432Z	CORD	1 (CORD ARMOR D8.8) FOR USA, CAN, MEX, PAN (120 V)
*	48	500-231Z	CORD	1 (CORD ARMOR D8.8) FOR SIN, MAL, UAE (230 V-240 V)
*	48	500-201Z	CORD	1 (CORD ARMOR D10.1) FOR SAU, UAE (110 V)
*	48	500-455Z	CORD	1 (CORD ARMOR D8.8) FOR CHN, PHI
*	48	500-439Z	CORD	1 (CORD ARMOR D8.8) FOR AUS, NZL
*	48	500-435Z	CORD	1 (CORD ARMOR D8.8) FOR GBR (230 V), HKG
*	48	500-461Z	CORD	1 (CORD ARMOR D8.8) FOR GBR (110 V)
*	48	500-447Z	CORD	1 (CORD ARMOR D8.8) FOR SUI
*	48	500-487Z	CORD	1 (CORD ARMOR D8.8) FOR BRA
*	48	500-470Z	CORD	1 (CORD ARMOR D8.8) FOR TPE
*	48	500-234Z	CORD	1 (CORD ARMOR D8.8) FOR KOR
*	49	334-499	STAND	1 FOR USA, CAN
*	50	334-500	SPRING	1 FOR USA, CAN
*	51	961-419Z	TERMINAL	1 FOR AUS, NZL, SAF, GBR, EUROPE, NOR, SWE, DEN, FIN, AUT, TUR, SUI, RUS, CHN, TPE, KOR
*	52	334-472	NOISE SUPPRESSOR	1 FOR AUS, NZL, SAF, GBR, EUROPE, NOR, SWE, DEN, FIN, AUT, TUR, SUI, RUS, CHN, TPE, KOR
*	53	959-140	CONNECTOR 50091 (10 PCS.)	1
*	53	959-141	CONNECTOR 50092 (10 PCS.)	2 FOR AUS, NZL, SAF, GBR, EUROPE, NOR, SWE, DEN, FIN, AUT, TUR, SUI, RUS, CHN, TPE, KOR
*	54	331-269	INTERNAL WIRE	1 FOR AUS, NZL, SAF, GBR, EUROPE, NOR, SWE, DEN, FIN, AUT, TUR, SUI, RUS, CHN, TPE, KOR
*	55	334-837	REAR BASE	1 EXCEPT FOR USA, CAN
*	55	334-838	REAR BASE	1 FOR USA, CAN
	56	307-811	TAPPING SCREW (W/FLANGE) D4 X 16 (BLACK)	4
*	57	949-216	MACHINE SCREW M4 X 10 (10 PCS.)	4 FOR IND
*	58	958-731Z	HOLDER SPRING (B)	4 FOR IND
*	59	958-732Z	GUARD PLATE (A)	4 FOR IND
*	60	958-734Z	BLADE HOLDER (1 PAIR)	2 FOR IND
*	61	976-815	MACHINE SCREW (W/WASHERS) M4 X 8	4 FOR IND
*	62	958-728	PLANER BLADES 82 MM (1 PAIR)	2 FOR IND
*	63	958-733Z	BACK METAL	2 FOR IND
*	64	334-481	CUTTER BLOCK ASS'Y (W/B.B)	1 INCLUD. 1, 3, 57-59 FOR IND
*	65	334-493	FAN GUIDE	1 FOR CHN

### STANDARD ACCESSORIES

P 20ST

ITEM NO.	CODE NO.	DESCRIPTION	NO. USED	REMARKS	
501	940-543	BOX WRENCH 10 MM	1		
502	958-842Z	GUIDE	1		
503	940-650	STOPPER SCREW M5 X 14	1		
* 504	314-767	BLADE SHARPENING ASS'Y	1	EXCEPT FOR DOUBLE EDGE BLADE TYPE	
* 505	334-846	CASE	1	FOR USA, CAN	
* 506	316-419	SET GAUGE	1	EXCEPT FOR IND	
* 507	334-502	DUST ADAPTER	1	FOR USA, CAN	
* 508	322-955	DUST BAG (BLACK)	1	FOR USA, CAN	
* 509	334-693	SET GAUGE	1	FOR IND	

### OPTIONAL ACCESSORIES

ITEM NO.	CODE NO.	DESCRIPTION	NO. USED	REMARKS	
601	334-503	ELBOW	1		
602	334-502	DUST ADAPTER	1		
603	322-955	DUST BAG (BLACK)	1		