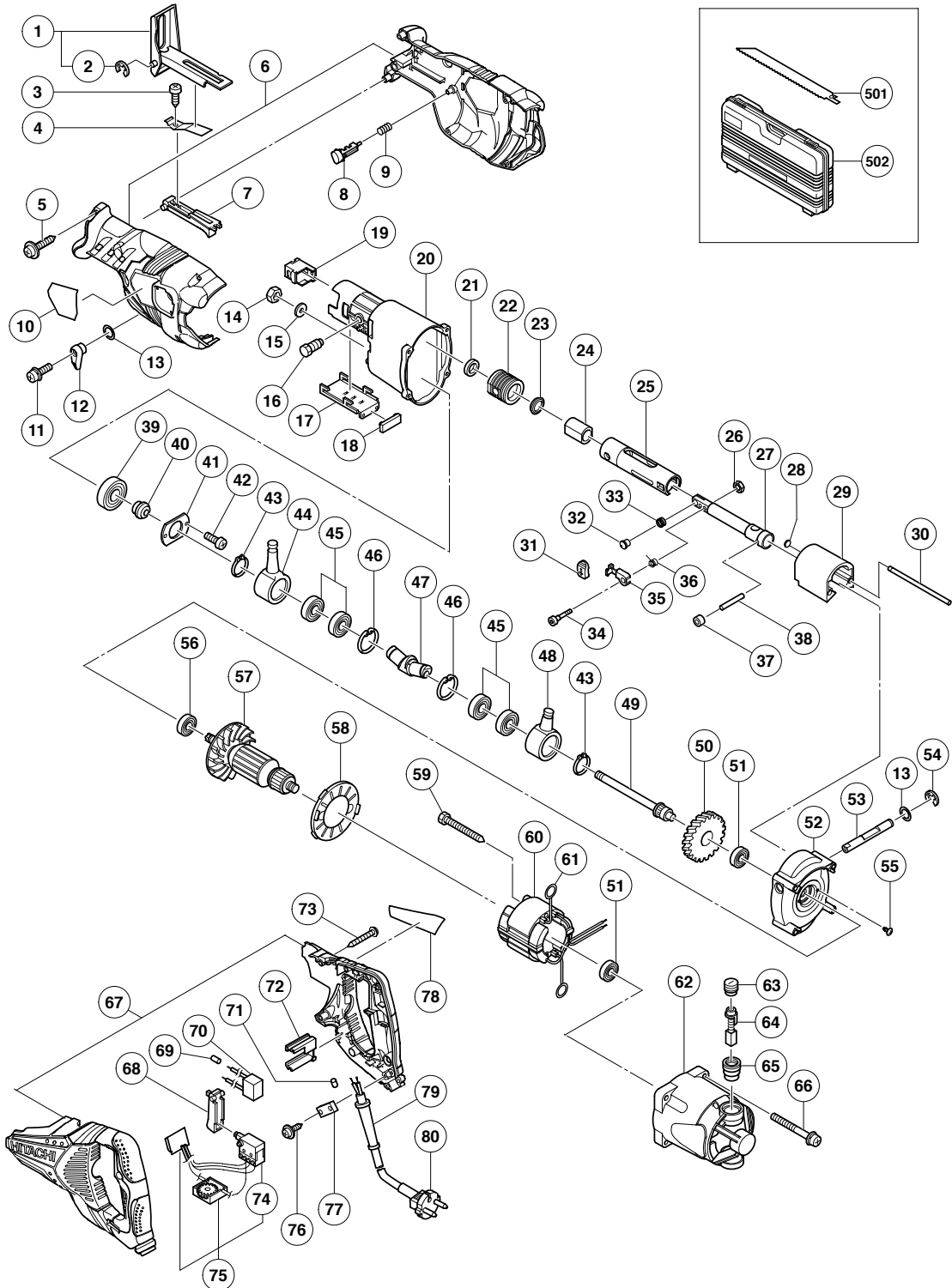


ELECTRIC TOOL PARTS LIST

■ RECIPROCATING SAW Model CR 13VBY

2007 · 2 · 5
(E1)



PARTS

CR 13VBY

ITEM NO.	CODE NO.	DESCRIPTION	NO. USED	REMARKS
1	326-575	BASE ASS'Y (C)	1	INCLUD. 2
2	872-971	RETAINING RING (E-TYPE) FOR D3 SHAFT	1	
3	327-693	TAPPING SCREW D4X8 (BLACK)	1	
4	326-595	HOLD SPRING (C)	1	
5	307-028	TAPPING SCREW (W/FLANGE) D4X25 (BLACK)	9	
6	326-584	FRONT COVER (D).(E) SET	1	
7	326-597	BASE LEVER (C)	1	
8	326-596	PUSHING BUTTON (C)	1	
9	326-594	PUSHING SPRING	1	
10		NAME PLATE	1	
11	303-851	SEAL LOCK SCREW (W/WASHERS) M4X10 (BLACK)	1	
12	326-593	CHANGE KNOB (C)	1	
13	872-654	O-RING (1AP-10)	2	
14	327-325	NUT M8	1	
15	327-114	WASHER (G)	1	
16	318-493	BOLT M10	2	
17	326-574	BASE ADAPTER (C)	1	
18	326-779	CUSHION RUBBER (C)	1	
19	326-589	BLADE HOLDER (C)	1	
20	327-116	GEAR COVER (D)	1	
21	318-458	FELT WASHER	1	
22	326-576	SEAL SLEEVE (C)	1	
23	318-459	V-RING	1	
24	326-579	METAL (C)	1	
25	326-578	GUIDE SLEEVE (C) ASS'Y	1	INCLUD. 24
26	949-566	LOCK NUT M5 (10 PCS.)	1	
27	326-580	PLUNGER (C)	1	
28	327-123	RUBBER SPACER	2	
29	327-122	COUNTER WEIGHT (D)	1	
30	327-121	WEIGHT SHAFT (D)	2	
31	321-130	CAP	1	
32	321-134	HOLDER PIN (B)	1	
33	318-483	SPRING (B)	1	
34	326-590	SPECIAL BOLT M5	1	
35	326-588	LEVER (C)	1	
36	326-591	BLADE SPRING	1	
37	327-124	SWING ROLLER	2	
38	326-585	PIN D6	1	
39	600-3DD	BALL BEARING 6003DDCMPS2S	1	
40	327-118	SUB SHAFT (D)	1	
41	318-476	BEARING COVER (B)	1	
42	326-573	SEAL LOCK SCREW M4X10	2	
43	967-261	RETAINING RING FOR D17 SHAFT	2	
44	326-581	RECIPRO PLATE (C)	1	
45	327-694	BALL BEARING 6003VVCM (NYLON RETAINER)	4	
46	939-556	RETAINING RING FOR D35 HOLE (10 PCS.)	2	
47	327-119	SECOND SHAFT (D)	1	
48	327-115	RECIPRO PLATE (D)	1	
49	327-120	SECOND SHAFT (E)	1	
50	318-473	GEAR	1	
51	608-VVM	BALL BEARING 608VVC2PS2L	2	

PARTS

CR 13VBY

ITEM NO.	CODE NO.	DESCRIPTION	NO. USED	REMARKS	
	52	327-117	INNER COVER (D)	1	
*	53	326-602	CHANGE SHAFT (C1)	1	
*	53	326-603	CHANGE SHAFT (C2)	1	FOR USA, CAN
	54	974-577	RETAINING RING (E-TYPE) FOR D7 SHAFT	1	
	55	314-430	SLOTTED HD. SCREW (SEAL LOCK) M4X10	2	
	56	600-1VV	BALL BEARING 6001VVCMP2L	1	
*	57	360-795C	ARMATURE 110V	1	
*	57	360-795U	ARMATURE ASS'Y 120V	1	INCLUD. 51, 56
*	57	360-795E	ARMATURE 230V	1	
*	57	360-795F	ARMATURE 240V	1	
	58	318-467	FAN GUIDE	1	
	59	953-174	HEX. HD. TAPPING SCREW D5X55	2	
*	60	340-698C	STATOR ASS'Y 110V	1	INCLUD. 61
*	60	340-698D	STATOR ASS'Y 120V	1	INCLUD. 61
*	60	340-698E	STATOR ASS'Y 230V	1	INCLUD. 61
*	60	340-698F	STATOR ASS'Y 240V	1	INCLUD. 61
	61	930-703	BRUSH TERMINAL	2	
	62	327-126	HOUSING	1	
	63	945-161	BRUSH CAP	2	
	64	999-043	CARBON BRUSH (1 PAIR)	2	
	65	958-900	BRUSH HOLDER	2	
	66	307-224	MACHINE SCREW (W/WASHERS) M5X60 (BLACK)	4	
*	67	326-600	HANDLE (E).(F) SET	1	
*	67	326-599	HANDLE (E).(F) SET	1	FOR AUS, NZL
	68	322-133	SWITCH TRIGGER	1	
*	69	981-373	TUBE (D)	1	FOR SIN, KUW, IND
*	69	981-373	TUBE (D)	2	EXCEPT FOR SIN, KUW, IND, USA, CAN
*	70	930-039	NOISE SUPPRESSOR	1	EXCEPT FOR SIN, KUW, IND, USA, CAN
	71	981-373	TUBE (D)	2	FOR CORD
	72	326-598	TRIAC HOLDER	1	
	73	305-490	TAPPING SCREW (W/FLANGE) D4X30 (BLACK)	2	
*	74	321-960	SWITCH (1P SCREW TYPE)	1	
*	74	321-961	SWITCH (1P SCREW TYPE)	1	FOR GBR (110V)
*	74	321-962	SWITCH (1P SCREW TYPE) W/SAFETY LOCK	1	FOR AUS, NZL
*	74	321-959	SWITCH (1P SCREW TYPE)	1	FOR USA, CAN
*	75	318-505	SWITCH ASS'Y (1P SCREW TYPE)	1	INCLUD. 74
*	75	318-817	SWITCH ASS'Y (1P SCREW TYPE)	1	INCLUD. 74 FOR GBR (110V)
*	75	320-142	SWITCH ASS'Y (1P SCREW TYPE) W/SAFETY LOCK	1	INCLUD. 74 FOR AUS, NZL
*	75	318-504	SWITCH ASS'Y (1P SCREW TYPE)	1	INCLUD. 74 FOR USA, CAN
	76	984-750	TAPPING SCREW (W/FLANGE) D4X16	2	
	77	937-631	CORD CLIP	1	
	78		HITACHI LABEL	1	
	79	953-327	CORD ARMOR D8.8	1	
*	80	500-234Z	CORD	1	(CORD ARMOR D8.8)
*	80	500-247Z	CORD	1	(CORD ARMOR D8.8) FOR FIN, NOR, SWE, DEN
*	80	500-435Z	CORD	1	(CORD ARMOR D8.8) FOR SIN, KUW, GBR (230V)
*	80	500-461Z	CORD	1	(CORD ARMOR D8.8) FOR GBR (110V)
*	80	500-439Z	CORD	1	(CORD ARMOR D8.8) FOR AUS, NZL
*	80	500-434Z	CORD	1	(CORD ARMOR D8.8) FOR USA, CAN

STANDARD ACCESSORIES

CR 13VBY

ITEM NO.	CODE NO.	DESCRIPTION	NO. USED	REMARKS
* 501	327-129	SABER SAW BLADES NO. 341 150L P. 14 (3 PCS.)	1	
* 501	318-621	SABER SAW BLADES NO. 132 203L (5 PCS.)	1	FOR USA, CAN
502	327-054	CASE	1	

OPTIONAL ACCESSORIES

ITEM NO.	CODE NO.	DESCRIPTION	NO. USED	REMARKS
601	959-610	SABER SAW BLADES NO. 1 (5 PCS.)	1	
602	958-182	SABER SAW BLADES NO. 2 (5 PCS.)	1	
603	958-183	SABER SAW BLADES NO. 3 (5 PCS.)	1	
604	959-611	SABER SAW BLADES NO. 4 (5 PCS.)	1	
605	958-185	SABER SAW BLADES NO. 5 (5 PCS.)	1	
606	958-188	SABER SAW BLADES NO. 8 (5 PCS.)	1	
607	996-427	SABER SAW BLADES NO. 9 (3 PCS.)	1	
608	318-611	SABER SAW BLADES NO. 101 150L P. 10 (5 PCS.)	1	
609	318-612	SABER SAW BLADES NO. 102 228L P. 10 (5 PCS.)	1	
610	318-613	SABER SAW BLADES NO. 103 150L P. 14 (5 PCS.)	1	
611	318-614	SABER SAW BLADES NO. 104 228L P. 14 (5 PCS.)	1	
612	318-617	SABER SAW BLADES NO. 107 150L P. 24 (5 PCS.)	1	
613	318-618	SABER SAW BLADES NO. 108 228L P. 24 (5 PCS.)	1	
614	324-818	SABER SAW BLADES NO. 109 150L P. 18 (5 PCS.)	1	
615	324-819	SABER SAW BLADES NO. 110 228L P. 18 (5 PCS.)	1	
616	318-619	SABER SAW BLADES NO. 121 305L P. 6 (5 PCS.)	1	
617	318-620	SABER SAW BLADES NO. 131 305L P. 10/14 (5 PCS.)	1	
618	318-621	SABER SAW BLADES NO. 132 203L (5 PCS.)	1	
619	327-691	SABER SAW BLADES NO. 342 200L P. 14 (3 PCS.)	1	
620	327-692	SABER SAW BLADES NO. 343 250L P. 14 (3 PCS.)	1	